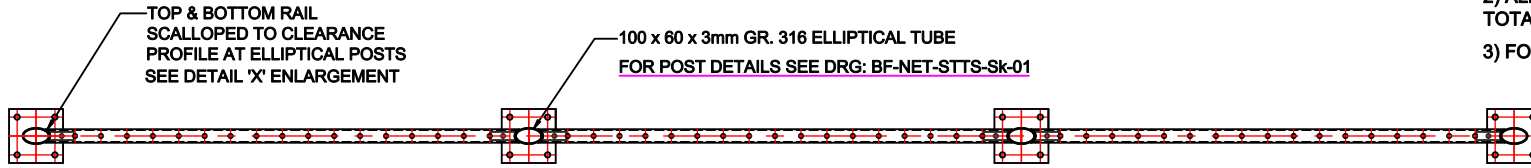


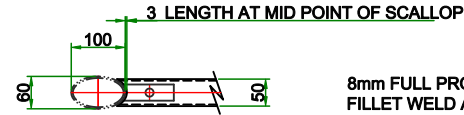
**SITE SURVEY & REFERENCE ONLY DIMENSIONS (BRACKETED)**

**NOTES:**

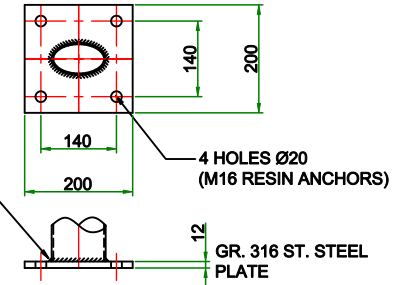
- 1) ALL STAINLESS STEEL GRADE ASTM-316 (SANDVIK R365 OR EQUIV.)
- 2) ALL WELDED JOINTS CLEANED OFF FLUSH & SMOOTH WITH TOTAL UNIT DULL POLISHED 240 GRIT (SATIN FINISH)
- 3) FOR G.ARRANGEMENT SEE DRAWING: BF-NET-TW-NOTT-ST-TS-101



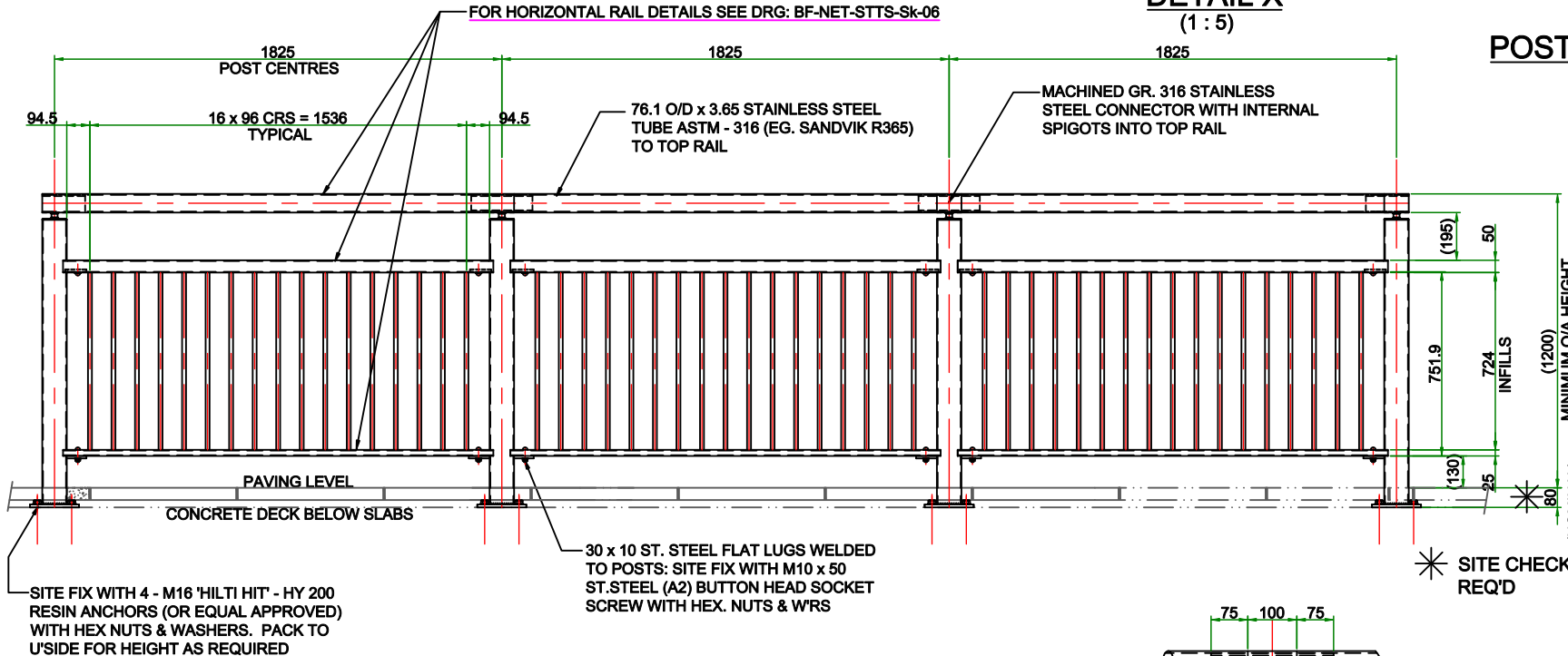
**PLAN SECTION - TYPICAL**  
(TOP RAIL NOT SHOWN FOR CLARITY)



**DETAIL X**  
(1 : 5)



**POST BASE PLATE DETAIL**  
(1 : 5)

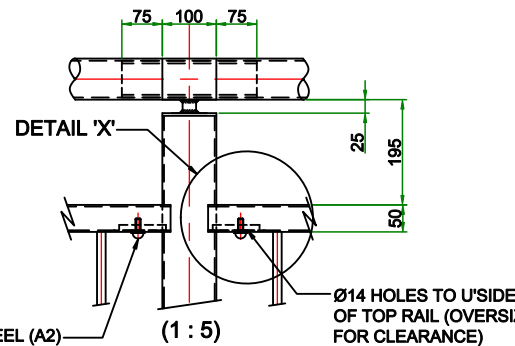


✳ SITE CHECK REQ'D

**TYPICAL SECTION**

**STATION STREET TRAM STOP**  
**1 No REQ'D**

LOCATIONS AS SHOWN ON DRAWING: BF-NET-STTS-101 (C1)



**ENLARGED TOP SECTION**  
(1 : 5)

SITE FIX WITH M10 x 25 ST. STEEL (A2) BUTTON HEAD SOCKET SCREW, LOCK WASHER & M12 FLAT (OVERSIZE) WASHER FITTED FROM U'SIDE INTO M10 TAPPED HOLE ON POST LUG

C1	CONSTRUCTION ISSUE	12.08.15
P1	PRELIMINARY ISSUE FOR COMMENT	09.06.15
Rev	Amendments	
Dim.	MC	Date 09.06.15
Chkd.	Date	Scale 1 : 10 @ A1
		(1 : 20 @ A3)
Client:	TAYLOR WOODROW	
Project:	NET - NOTTINGHAM STATION STREET TRAM STOP	
<b>BARWEST FABRICATIONS LTD</b>		
Units 4 & 5 Lodge Farm		
Tockington		
Bedfordshire		
Tel: 01525 878777 Fax: 01525 878888		
Drawing Title STAINLESS STEEL - BARRIER RAILS : STATION STREET TRAM STOP		
Drawing No.	BF-NET-STTS-006	Rev. C1